



ART

THE ART OF BATTLE - CLIENT GUIDE

Level examples, commission process & how to book.

LEVEL

SELECTION



PAINT LEVEL EXAMPLES



1

1 STAR

Our "1 STAR" paint level is by far the most affordable way to fill your ranks with fantastic looking miniatures.



2

2 STAR

Our "2 STAR" paint level will add more details to your miniature. Perfect for the gamer who wants an overall custom finish to their army.



3

3 STAR

Our "3 STAR" paint level doesn't skimp on colour or contrast and will stand out in even the mightiest of battles.



4

4 STAR

Our "4 STAR" paint level sports incredibly smooth blending and careful colour selection. They are almost as at home in the showcase as they are on the battlefield.



5

5 STAR

Our "5 STAR" paint level is the ultimate in miniature painting. At this level we will deliver a showcase quality paint job that can be customised in any way desired.

BASING EXAMPLES

Feel free to mix & match your colours and elements!
Level 1=1 Element, Level 2=2 Elements, Level 3=3 Elements.

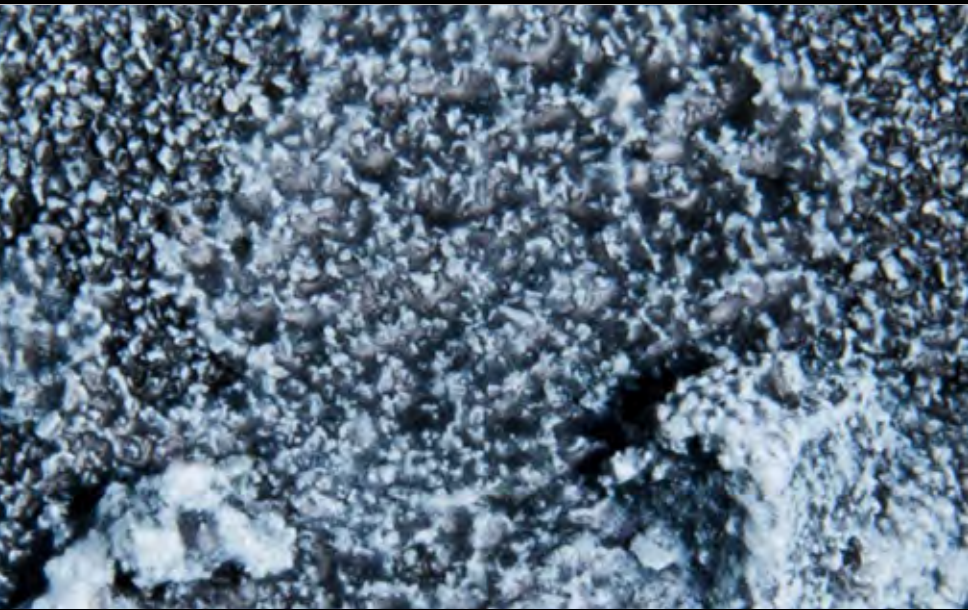


LEVEL 1 = \$2+

LEVEL 2 = \$3+

LEVEL 3 = \$4+

SPECIAL EDITION



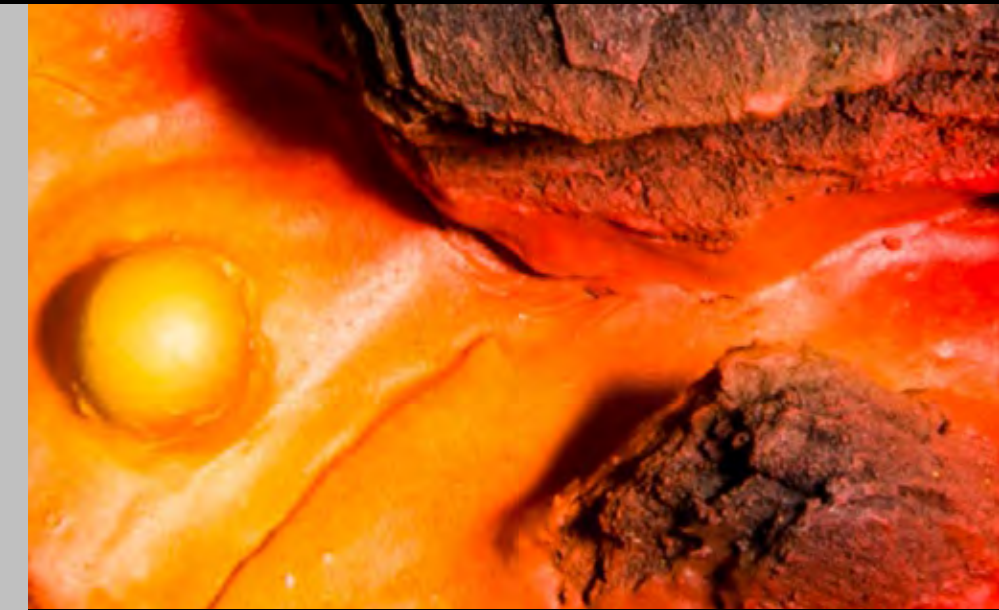
1 URBAN



2 APOCALYPTIC



3 SNOW



SE LAVA - \$5+



1 BATTLEFIELD



2 GORY SNOW



3 URBAN



SE SWAMP - \$5+



1 TURF



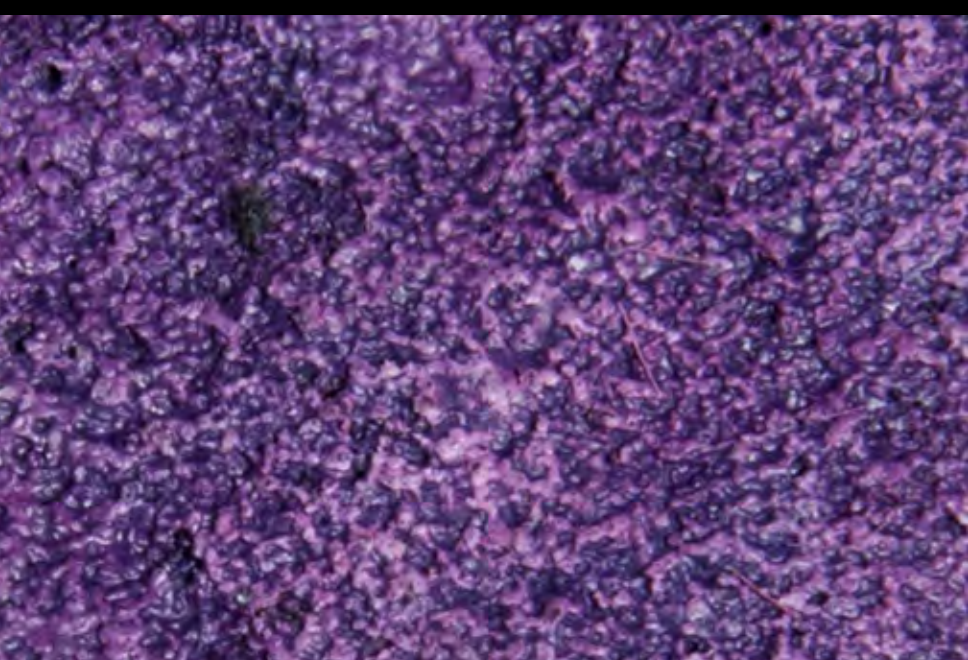
2 WASTELAND



3 AUTUMN



SE RUST - \$5+



1 ET



2 BATTLEFIELD



3 DESERT



SE LUSH - \$5+

COMMUNION PROCESSIONS



COMMISSION PROCESS



1

You will be let known an estimate of time before we will be able to begin on your commission - Sometimes we will be able to begin the project earlier or sometimes it may be later depending on how long earlier bookings take to complete. We are a small business who will take time to ensure the end result of your models is of the highest quality within your level choice and paint scheme specifics, this takes time, and the timing does vary.

2

We receive your models after you have posted them. At this time you are officially added to our bookings list. You will be notified of your model/s arrival.

3

Waiting - the period of time previously mentioned before we begin work on your project. This is the best time to send us a list of your paint scheme specifics, any reference images you will like us to use for inspiration and any assembly specifics you may require.

4

We will be in contact to let you know that we have begun or are beginning on your project when we are up to your booking.

5

We will ask for your postage details & requirements. When your models are complete & we have your postage information, you will be sent professional photos of your models and at this point you will also receive your invoice. Once payment clears, your models will be posted to you!

IN A HURRY?

As a small popular business we do have restrictions as to how quickly we can complete projects on our bookings list. Quality is our biggest priority and we are not one's to rush perfection!

If you have a tight deadline which does not fit in with our current booking schedule we do have a "Rush System" which allows us to work over-time to ensure your project will be ready for your deadline and still treated with the care it deserves!

The "Rush System" costs an extra 30% of the commission price so our painters can work nights and weekends to complete your project.

The Rush System is subject to availability and will depend on our current work load whether it will be realistic to have it completed for you.

Let us know your situation and we will let you know whether or not it is possible at the time.

FAQ's

Do I have to pay a deposit?

There are no upfront payments. Full payment is due on completion of your project when you receive your invoice. To secure your booking we will need to receive your models.

I have a large project, can I have a discount?

The Art Of Battle prices are estimated per commission. The size of the commission, model detail, batch numbers, etc are taken into account when pricing - this means we do not offer further discounts, as this is already being taken into consideration per commission details. Prices are not negotiable

Is postage included in the price?

No, postage is calculated at the completion of the commission via Australia Post. The final postage amount will be included in your invoice.

Do you paint other miniatures other than Warhammer?

Yes! We paint all kinds of miniatures! Have a browse through our project galleries on our website and you can see some awesome projects with many different types of models!

Will I get WIP photos?

There will be no work in progress photos as time is tight, though you will get professional quality photos when your models are complete.

Will you paint my already assembled models?

Of course! We can paint pre-assembled models or assemble them for you at a small extra cost.

Will you upgrade/finish my half painted models?

No, unfortunately we do not offer this service. We will paint your models from the beginning only. We also only offer our basing and assembly services along with painting the models, we do not offer these services separately

Can you order models for me?

We do not offer an ordering service, but do invite you to use our postage address in the shipping section of online orders for streamline delivery to us.

Do you offer your service internationally?

Yes, of course. In fact this can work out very well for international clients with cheaper prices due to some exchange rates!

How do I pay?

Payment is made via bank transfer. The account details you will need to pay into will be included in your invoice when your models are complete.

Will you match my models to some older models?

If provided with model examples or reference images of painted models, we will use these to seek inspiration from but will not directly copy another artist's work. If it is to match with your pre-existing models we will paint the models you send us to be cohesive with them, though they will be painted to our standards and in our painting style. We always recommend if matching to older models to post at least one along with the project as reference for best results.

POSTAGE PROCESS



POSTAGE TO THE ART OF BATTLE

- 1** Pack models into box or wargaming case as carefully as possible. Models should be well padded and packed so they do not move around in the box - movement causes breakage.
- 2** Address package to:
"Please confirm our current postal address with us before posting your project".
- 3** Ensure you leave your name and return details on the postage packaging so TAOB can identify that it is your project that we have received.
- 4** Post.
We always encourage clients to use Australia Post Insurance to cover the entire costs of their models so they are not left out of pocket if items are to go missing or be broken in the postal carrier's hands.
- 5** Wait.
We will be in contact soon when we receive your package.
- 6** Package arrives at TAOB and once received you will officially be added to the bookings list and notified of your item/s arrival.

POSTAGE FROM THE ART OF BATTLE

- 1** We will email and ask for your postage requirements:
 - What is your postal address?
 - Will you be requiring Express Postage?
 - * Will you be requiring Australia Post Insurance Cover?
 - If requiring Australia Post Insurance, how much cover would you like purchased?
- 2** An invoice will be sent via email to you, with final total commission cost & postage cost - this is to be paid in full.
- 3** TAOB will pack your models as safely as possible.
- 4** Your models will be posted with the details you have previously provided once payment clears.
- 5** The Art Of Battle will send you an email confirming that your item/s have been posted off to you and included in this email will be your tracking number.

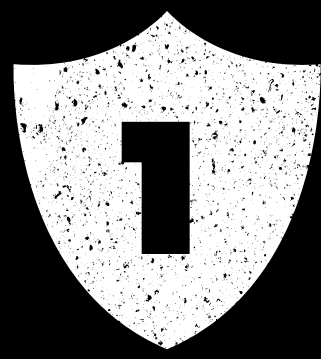
PLEASE KEEP IN MIND

The Art Of Battle is not responsible for any broken models or models that go missing.
We always encourage clients to purchase Australia Post Insurance cover in case of loss or damage to the models for the full value of the models, case, postage & full commission cost a minimum.

The Art Of Battle is also not responsible for any postal delays, we have no control over your models once they have been handed over to the postal carrier.

HOW TO BOOOK





PUT ME TOGETHER & CLEAN ME UP

Do your model/s need assembly & or mould line cleaning?

DO YOU REQUIRE ASSEMBLY & OR MOULD LINE CLEANING?

YES

NO

ASSEMBLY/CLEANING

\$1-55

ASSEMBLY & MOULD LINE CLEANING PRICES WILL DEPEND ON MODEL SIZE AND DIFFICULTY.



LET'S GET PAINTED

Select your chosen paint level per model

MODEL SIZE	1 STAR	2 STAR	3 STAR	4 STAR	5 STAR
SMALLS	\$4-6	\$7-9	\$14-22	\$27-45	\$80+
STANDARDS	\$9-17	\$17-28	\$22-40	\$44-66	\$110+
HEAVIES	\$14-20	\$20-34	\$34-50	\$66-90	\$145+
HEROES	\$35+	\$55+	\$82+	\$100+	\$165+
CAVALRY	\$20-40	\$40-50	\$50-72	\$90-110	\$220+
CAVALRY HEROES	\$80+	\$110+	\$165+	\$200+	\$330+
MONSTERS & ROBOTS	\$35-55	\$55-100	\$90-155	\$135-220	\$330+
VEHICLES & MONSTERS	\$45-70	\$66-135	\$110-180	\$155-265	\$440+
L VEHICLES & MONSTERS	\$66-135	\$90-180	\$155-265	\$220-355	\$550+
XL VEHICLES & MONSTERS	\$135+	\$175+	\$265+	\$355+	POA

*PRICES ARE ONLY A ROUGH GUIDE, PLEASE EMAIL US FOR A MORE COMPLETE PRICE ESTIMATE. PROJECTS@THEARTOFBATTLE.COM.AU

BEFORE YOU BOOK WITH US

Postage and handling is not included.

Prices are per figure.

Painting prices do not include assembly.

Painting prices do not include basing.

Payment is to be paid in full and is due immediately upon commission completion.

A late fee of 5% of the full commission price will be incurred every week after the commission is complete if payment isn't made upon completion of the commission.

Magnetisation will be added on request of price estimate due to the huge variation from miniature to miniature.

All miniatures are clear coated with a high quality satin varnish to help protect paint against chips and normal gaming wear.

It is a \$100 commission price minimum for us to take on your project.

The Art Of Battle prices are estimated per commission. The size of the commission, model detail, batch numbers, etc are taken into account when pricing - this means we do not offer further discounts, as this is already being taken into consideration per project details.

Prices are not negotiable.

If provided with model examples or reference images of painted models, we will use these to seek inspiration from but will not directly copy another artist's work, if it is to match with your pre-existing models we will paint the models you send us to be cohesive with those models, though they will be painted to our standards and in our painting style. We strongly advise you check out our artwork before you place an order with us to get a feel of our general painting style, your models will be painted in our painting style if you commission us to paint them so it is good to be familiar with this before you post us your models.

We always encourage clients to use Australia Post insurance to cover the entire costs of their models, commission cost, postage costs, etc at a minimum so clients are not left out of pocket if items are to go missing or be broken in the postal carrier's hands.

The Art Of Battle is not responsible for any broken models or models that go missing in the postal carriers hands.

There are no upfront payments. Full payment is due on completion of your project via bank transfer.

We do not accept payment plans.

A cancellation fee of \$150 will be incurred for any bookings that are cancelled by the client.

THE ART OF BATTLE

PROFESSIONAL MINIATURE PAINTING SERVICE



GETTING BASED

DO YOU REQUIRE BASING?

YES

NO

If yes, select your chosen Basing style and level.

CHOOSE FROM OUR LARGE ARRAY OF BASING OPTIONS AND FEEL FREE TO MIX UP ELEMENTS AND COLOURS TO HAVE A COMPLETELY CUSTOM BASING ARRANGEMENT.

STANDARDS SIZE BASING

\$2-5

PRICES DEPICTED REPRESENT 25-32MM BASE SIZES, LARGER BASES MAY INCUR AN EXTRA CHARGE.



LET'S TALK ABOUT IT

Email your above selected project details along with your list of models to:
projects@theartofbattle.com.au
for your free price estimate

WWW.THEARTOFBATTLE.COM.AU